

भारत सरकार GOVERNMENT OF INDIA
रेल मंत्रालय MINISTRY OF RAILWAYS
(रेलवे बोर्ड) (RAILWAY BOARD)

RB Tele No. 01/2016

No:2003/Tele/RCIL/1 pt.(Contd)

New Delhi Dated: 18 /10/2016

The General Managers,
All Indian Railways

TELECOM CIRCULAR No 01/2016

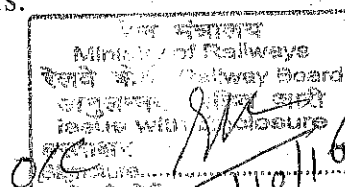
**Sub: Installation of Pole mounts / Towers by RailTel Corporation
of India(RCIL) on Railway land and buildings-reg.**

Board (ME, ML & FC) has approved installation of Pole Mounts/Towers and associated equipments on Railway land / buildings by RailTel Corporation of India (RCIL) for its business with following terms & conditions:-

1. Gross revenue earned by RailTel from the pole Mounts/Towers will form a part of the revenue shared by RCIL with Ministry of Railways (at present@7%).
2. In addition to the revenue share RCIL will deposit an annual token licence fee per location. The token licence fee (based on the commercial categorization of the station) will be as follows.

SN	Station Categorization	Annual Token License fee (station/colony/office complex etc. each will be counted as one location)
1.	A1, C	₹ 3000.00
2.	A	₹ 2000.00
3.	B, D & others	₹ 1000.00

3. Revenue share and Token licence fee from this activity will be separately accounted under revenue head Z-242.
4. The token licence fee and revenue sharing shall be reviewed by Railway Board before expiry of 3years of the proposed scheme.
5. Pole mounts / Towers will be owned, installed and maintained by RCIL. No private party will be permitted to install the poles. RailTel will make necessary investment for installation of poles and its maintenance.
6. Detailed record of inventory of Pole mounts / Towers will be maintained by RailTel with a copy of the same available with the concern Divisional railway authorities.
7. As per Railway Board letter no. 02/LML/13/12 dt. 05.05.2006, dt. 05.10.2006 & dt. 11.12.2006, RCIL has been permitted to install tower on Railway Land/Buildings and license fee chargeable per annum @ 6% of market value of land for open area & @7.5% of market value of land for roof top mounted towers. The inventory of towers installed under these instructions should be kept separately and license fee should be recovered as stipulated in the above mentioned Board's letters.



contd -2/-

8. Pole mounts / Towers proposed should be as per RDSO specifications. The pole's height, weight and other conditions will be in accordance with Railway Board's letter No. 02/LML/13/12 dated 11.12.2006.
9. RailTel shall identify such locations planned for erecting Pole mounts / Towers and make out a site plan for such sites RCIL to submit complete drawing along with site plan, foundation details, if any, along with the proposal to install Pole mounts / Towers to the office of DRM (S&T) of the concerned division. DRM (S&T) in turn will get necessary safety clearances from Engineering branch. Execution of work for erection of Pole mounts / Towers to be undertaken by RailTel at the proposed location only after necessary approval is communicated. Installation of Pole mounts / Towers should in no way hinder the operation and safety of rail services.
10. Underground cable, if any, to connect antenna(s) installed on the Pole mounts / Towers, to be laid as per Railway Board's Telecom circular No. 17/2013.
11. RCIL shall bear the cost of electric power required for the operation of Telecom equipments associated with Pole mounts / Towers as per usual terms and conditions for such power supply connections.
12. Railway shall not bear any liability for theft, damage etc. of the assets belonging to RCIL and installed along with the Pole mounts / Towers.
13. RailTel shall give an undertaking that such space occupied for installation of Pole mounts / Towers shall be vacated / returned back, if required by Railways at a future date. A notice period of two months will be given during which the space occupied shall be vacated by Railtel.
14. The DRM(S&T)'s office of the division will coordinate, monitor, regulate and work as nodal agency for all such Pole mounts/Towers installed by RailTel on the division. CSTE's office will maintain a consolidated position of all Pole mounts / Towers installed by RCIL at the Zonal level.

The above will be effective from the date of issue of this letter.

This issues with concurrence of Finance Directorate of the Ministry of Railways.


Director (Land & Amenities)
Railway Board


Exec. Director (Telecom)
Railway Board

No:2003/Tele/RCIL/1 pt.(Contd)

Dated: 18/10/2016

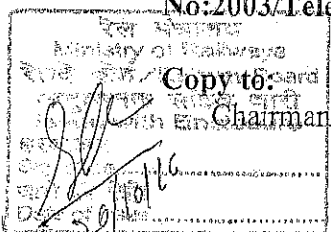
Copy to:

- (1) FA&CAO , All Zonal Railways
- (2) Deputy Comptroller and auditor, General of India (Railways)



For Financial Commissioner / Railways
Dated: 18 /10/2016

No:2003/Tele/RCIL/1 pt.(Contd)

Copy to:
Chairman & Managing Director, RailTel Corporation of India Ltd for information please.



o/c


Exec. Director / Telecom